

2023
24



A MESSAGE FROM THE DIRECTOR

Experimentation is our way of life at the Eli and Edythe Broad Art Museum at Michigan State University (MSU Broad Art Museum). In fact, you are holding and reading one of our most recent pieces of experimentation now. In 2022 we celebrated the tenth anniversary of the museum, and as we move into the next decade of the museum's existence, we continue to seek new ways to re-envision and connect with our audiences. It is with great pleasure that I introduce you to our new seasonal catalogue, giving you a glimpse of the museum's programming, exciting and thought-provoking new exhibitions, and so much more to come over the next six months!

This free catalogue is intended as a gift to our thousands of members, both to keep you informed of our ongoing activities and to thank you for all your support. The MSU Broad Art Museum exists for you and because of you. As we put together our programming each year, we think deeply about the important issues of our time, and we consider all the things we learn from you all—whether through visitor feedback, conversation, or comments left at our many interactive stations throughout the museum. We listen because we care. For ultimately, we are in this together, exploring and investigating the world around us, always with a desire to draw forth the great humanity and creativity in all of us.

The very foundation of MSU in 1855 was a bold experiment, revolutionizing the landscape of higher education by providing greater access to such opportunities. In this spirit, the museum intends to continue to carry this torch. We hope you enjoy learning about the fantastic programming and new initiatives coming in the months ahead. But even more so, we look forward to welcoming you to the museum, time and again, as we embark on this next chapter together.

With gratitude,



Steven L. Bridges
Interim Director &
Senior Curator and Director of Curatorial Affairs

2023
24



3 FALL EXHIBITIONS



13 THE CORE



15 WINTER EXHIBITIONS



19 BROAD UNDERGROUND



21 FOR FAMILIES



23 FOR STUDENTS



25 FOR EDUCATORS

FALL WINTER

SHOULDN'T YOU BE WORKING?

100 YEARS OF WORKING FROM HOME

June 10–December 17, 2023

Boundaries between labor and leisure are increasingly blurred. Digital technology enables new labor practices located in the home, which coexist with traditional domestic work by nannies and homemakers. They oscillate between a newfound freedom and the threat of total digital surveillance and exploitation.

Shouldn't You Be Working? considers the domestic sphere as an ever-changing site of labor. It contrasts the MSU Broad Art Museum's photographic collection with work by artists Chris Collins, Jay Lynn Gomez, Faith Holland, Won Kim, Keiichi Matsuda, Marisa Olson, Theo Triantafyllidis, Jon Rafman, Angela Washko, and Guanyu Xu.

Shouldn't You Be Working? 100 Years of Working From Home is organized by the Eli and Edythe Broad Art Museum at Michigan State University and curated by Associate Curator Teresa Fankhänel with Curatorial Assistant Dalina A. Perdomo Álvarez and Curatorial Research and Administrative Assistant Thaïs Wenstrom. Lead funding for this exhibition is provided by the Alan and Rebecca Ross Endowed Exhibition Fund.

RELATED EVENTS:

(DE)TOUR: BALANCING ACT
Thursday, Sep. 14, 6–7pm
(De)tour through the often-blurry boundaries between labor and leisure.

THIS IS NOT A TOUR:
SHOULDN'T YOU BE WORKING?
Sunday, Oct. 8, 1–2pm
Take an unconventional look at the exhibition with this offbeat, interactive tour.

EXHIBITION TOUR:
SHOULDN'T YOU BE WORKING?
Sunday, Dec. 17, 1–2pm
Computers have fundamentally changed the ways in which we work. Join Associate Curator Teresa Fankhänel for a walkthrough of the exhibition.

Image:

Installation view of *Shouldn't You Be Working?* Photo: Vincent Morse/MSU Broad Art Museum.



ANDREA CANEPA

AS WE DWELL IN THE FOLD

July 29, 2023–January 21, 2024

As we dwell in the fold investigates what it means to hide from the gaze of others. The tactile and experiential exhibition offers immersive, wearable metal and fabric sculptures. The first solo exhibition of Peruvian artist Andrea Canepa in the United States is inspired by her research into protective fabrics and their relation to the body—the many ways in which they shape who we are. Fabrics are protective garments and social constructs; they both liberate and oppress.

Andrea Canepa: As we dwell in the fold is organized by the Eli and Edythe Broad Art Museum at Michigan State University as part of the Artist Project Series and curated by Associate Curator Teresa Fankhänel. Support for this series is provided by the MSU Federal Credit Union. This exhibition is further supported by ifa Institut für Auslandsbeziehungen, Germany, and Lansing Welding, Inc.



RELATED EVENTS:

LIVE PERFORMANCE AND ARTIST TALK: ANDREA CANEPA
Wednesday, Sep. 20, 6–7:30pm
Join artist Andrea Canepa and dancers Saul Beceiro-Novo, Sloan Lemberg, and Sophie Parks as they explore this exhibition.

EXHIBITION TOUR: ANDREA CANEPA
Sunday, Jan. 21, 1–2pm
Join Associate Curator Teresa Fankhänel for a walkthrough of the exhibition.

Image: Dancers interacting with *As we dwell in the fold*. Photo: Vincent Morse/MSU Broad Art Museum.

2023 FALL OPENING PARTY

FRIDAY, SEP. 8, 6–10PM

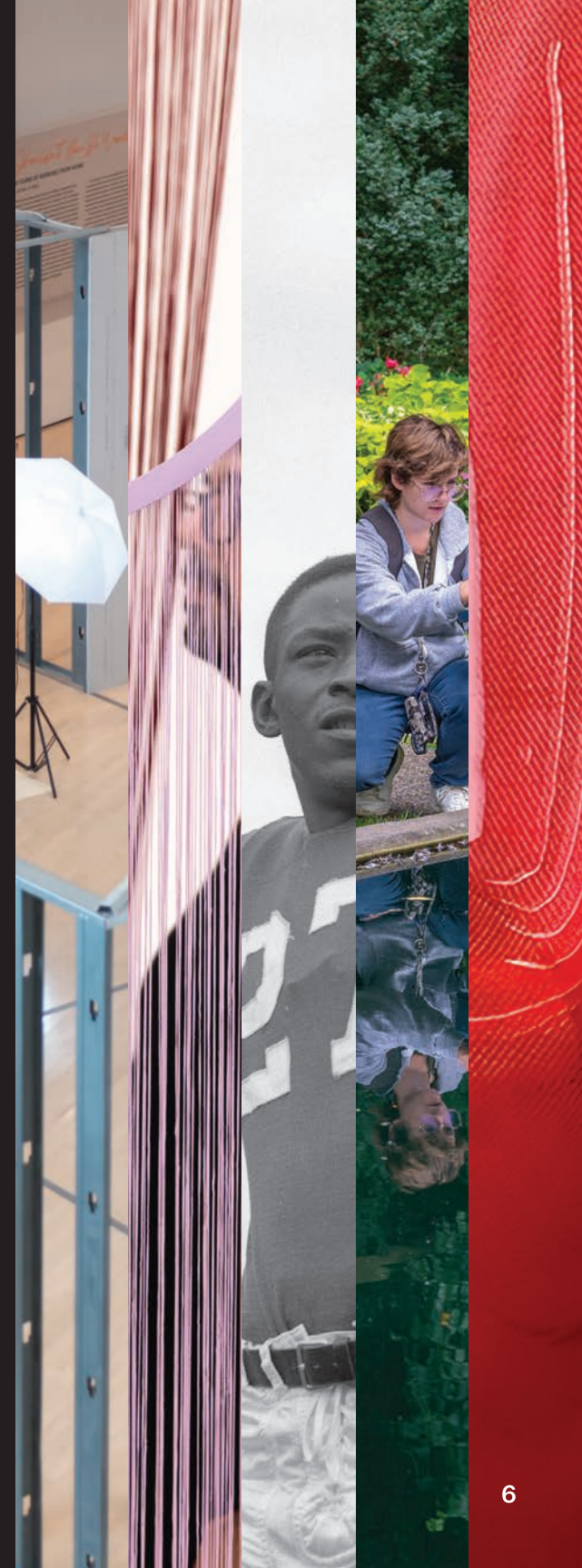
Kick off fall at the MSU Broad Art Museum with all new exhibitions! Drop in throughout the evening to explore the museum while enjoying tailgate-themed food and drinks, music from the Spartan Alumni Marching Band and Impact 89FM, photos with Sparty, screen printing, glow painting, button making, and more. All ages are welcome to this museum-wide party!

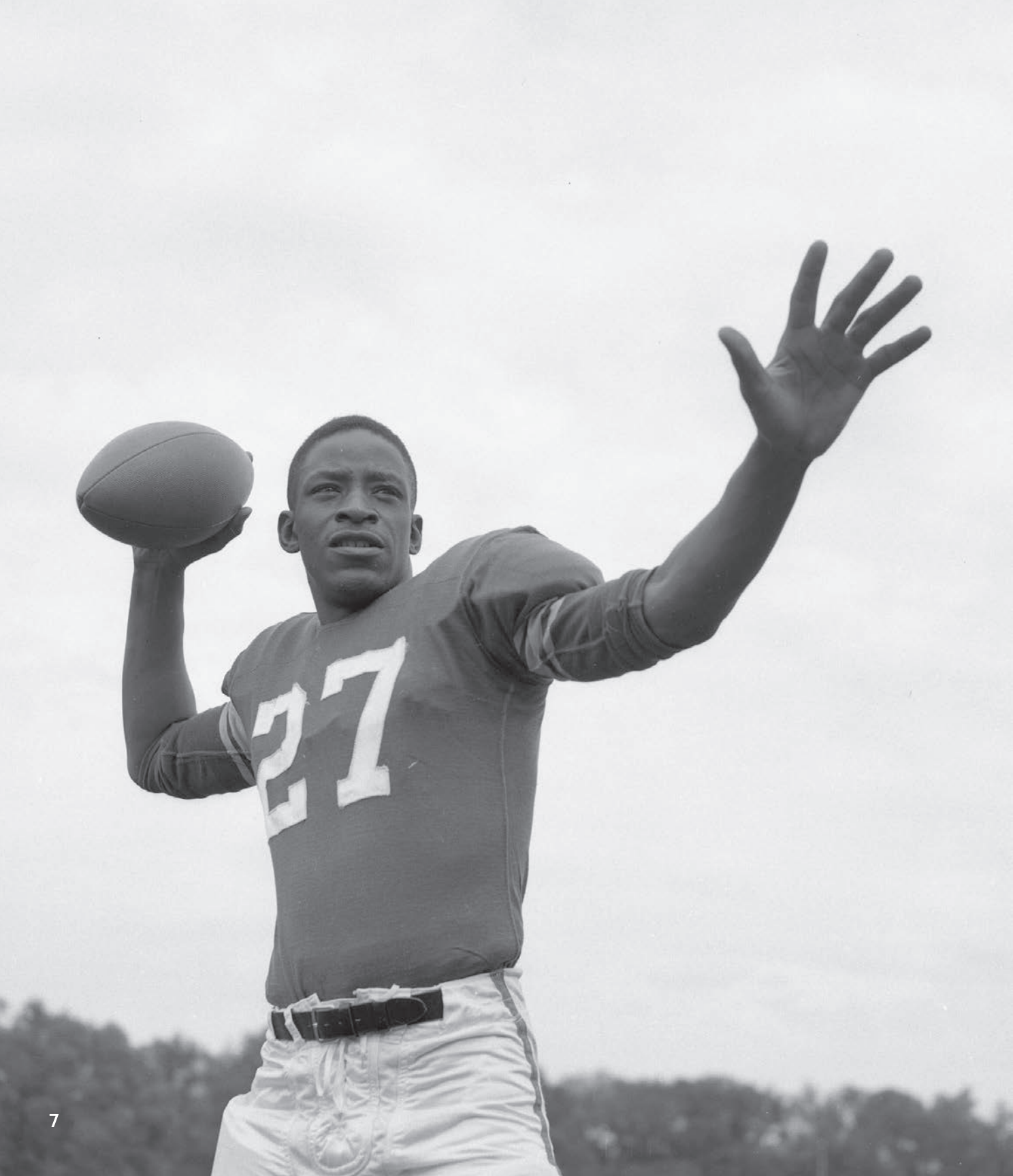
GLOW GREEN, GLOW WHITE!

At 8pm, everyone is invited to “glow green, glow white” as all art-making activities transition to use glowing art supplies to illuminate the remainder of the evening.



Visit broadmuseum.msu.edu to register for this free event!





RESISTANCE TRAINING

ARTS, SPORTS, AND CIVIL RIGHTS

August 19, 2023–February 18, 2024

If you were a professional athlete, a world-renowned artist, or a public figure, how would you use your popular status to effect change?

Resistance Training explores the shared values between artists and athletes in the advancement of social justice-related issues. Throughout history artists have looked to athletes and other public figures as sources of inspiration, encoding moments of social change in the works of art they create. This exhibition brings together a group of contemporary artists who investigate the intersection of sports and the advancement of civil rights in the United States, and at Michigan State University.

Resistance Training: Arts, Sports, and Civil Rights is organized by the Eli and Edythe Broad Art Museum at Michigan State University and curated by Steven L. Bridges, Senior Curator and Director of Curatorial Affairs, and Thais Wenstrom, Curatorial Research and Administrative Assistant. Major funding for this exhibition is provided by the Alan and Rebecca Ross Endowed Exhibition Fund, the MSU Federal Credit Union, and the Eli and Edythe Broad Endowed Exhibitions Fund, with additional support from Professor Charles Gliozzo.



Image:

Willie Thrower, 1950. Courtesy Michigan State University Archives and Historical Collections.

RELATED EVENTS:

**HOMECOMING PERFORMANCE:
AND THOSE SPARTANS PLAY
GOOD BALL**
Friday, Sep. 22, 2–6pm +
Saturday, Sep. 23, 12–4pm
A performance-installation work
by artist mike durkin.

**EXHIBITION TOUR:
RESISTANCE TRAINING**
Sunday, Sep. 24, 1–2pm
Join Interim Director and Senior
Curator Steven L. Bridges for a
walkthrough of the exhibition.

(DE)TOUR: GAME CHANGERS
Thursday, Oct. 12, 6–7pm
(De)tour through a discussion
about gender equality in athletics.

**POWER OF INFLUENCE: THE
INTERSECTION OF ARTS AND
SPORTS FOR SOCIAL CHANGE**
Wednesday, Nov. 29, 6–7:30pm
Join alumni, sports leaders, artists,
and MSU faculty for a conversation
around the potential of art and
sport to become a catalyst for
social change.

**THIS IS NOT A TOUR:
RESISTANCE TRAINING**
Sunday, Dec. 3, 1–2pm
Take an unconventional look at
the exhibition with this offbeat,
interactive tour.

**AN EVENING WITH
MAHMOUD ABDUL-RAUF**
January 2024 | MSU Erickson Hall
A lecture and conversation with
professional basketball player
Mahmoud Abdul-Rauf.

ARTIST TALK: WENDY WHITE
Wednesday, Feb. 7, 6–7pm
Gather with artist Wendy White as
she draws parallels between the
artist's studio and the field of play.



BEAL BOTANICAL GARDEN

CELEBRATING 150 YEARS OF PEOPLE, PLANTS, AND PLACE

September 2–December 17, 2023

Travel through time at the Beal Botanical Garden 150th anniversary exhibition. Discover how this living laboratory has become a beloved spot on our campus. The garden has evolved over time, but the ways people engage with it remain the same—it is a place to learn, relax, and grow. Whether you’ve enjoyed the garden over the years, or are just learning about it now, we invite you to celebrate this historic moment with us and to help us define the next chapter of its significance as we look to the future.

Beal Botanical Garden: 150 Years of People, Plants, and Place is organized by the W.J. Beal Botanical Garden with the Eli and Edythe Broad Art Museum at Michigan State University. The exhibition is curated by Alice Lynn McMichael, Lab for Education and Advancement in Digital Research director; Bill Hodgkins, Beal Scholar history intern; Michael Stamm, Department of History chair and professor; and Alan Prather, Beal Botanical Garden interim director and Plant Biology associate professor. Support is provided by the Alfred and Jean Goldner Beal Botanical Garden Excellence Fund and the Eli and Edythe Broad Endowed Exhibitions Fund.



RELATED EVENTS:

MUSEUM TOUR: DEEP-ROOTED WITH BEAL BOTANICAL GARDEN
Sundays, 1–2pm
Oct. 22, Nov. 19, + Feb. 18

What can art tell us about the relationship between plants and humans? Join Maeve Bassett, applied ethnobotanist and education program director of the Beal Botanical Garden, for an immersive tour unearthing the historical, social, and political narratives growing within works of art from the MSU Broad Art Museum collection.

Image:

Students work to identify plant species near the Beal Pond. Photo courtesy Derrick Turner.

SEEING IN 360 DEGREES

THE ZAHA HADID DESIGN COLLECTION

September 8, 2023–ongoing

If you could redesign the world around you to realize your vision for a better future, where would you start? For architect and designer Zaha Hadid, this process began by looking closely at ordinary objects and environments to design something new.

The MSU Broad Art Museum holds the largest collection of work by Zaha Hadid Design in North America. Totalling more than 150 objects, every work exemplifies the way Hadid and her studio experimented with materials, visual features, and function to create something that would improve the user experience.

Seeing in 360 Degrees displays the Zaha Hadid Design collection in conversation with Hadid's architecture to generate an innovative and exciting experience that challenges us to see the world differently.

Seeing in 360 Degrees: The Zaha Hadid Design Collection is organized by the Eli and Edythe Broad Art Museum at Michigan State University. Major support for the exhibition is provided by Hari Kern. The museum also extends its gratitude to Alan and Rebecca Ross for their support through several acquisitions featured in the exhibition. The exhibition is curated by Assistant Curator Rachel Winter.

RELATED EVENTS:

EXHIBITION TOUR: SEEING IN 360 DEGREES Sunday, Sep. 10, 1-2pm

Did you know that Zaha Hadid designed more than buildings? Join Assistant Curator Rachel Winter for a walkthrough of the exhibition.

ARCHITECTURE TOUR Sunday, Jan. 7, 1-2pm

Have you ever wondered why the MSU Broad Art Museum looks the way it does? Learn more about our unique building and the Pritzker Prize-winning architect behind it through this architecture tour led by Curatorial Research and Administrative Assistant Thais Wenstrom.

Image:

Zaha Hadid Design, *Kuki.ONE*, 2016. Eli and Edythe Broad Art Museum, Michigan State University, purchase, Eli and Edythe Broad Fund for the Acquisition of Modern and Contemporary Art, 2022.2. Photo courtesy Zaha Hadid Design.





Salvador Dalí
Remorse (Sphinx Embedded in the Sand), 1931.
Eli and Edythe Broad Art Museum, Michigan State
University, gift of John F. Wolfram, 61.8

OK! The CORE

THE CENTER FOR OBJECT RESEARCH AND ENGAGEMENT

OPENING NOVEMBER 2023

The CORE is a new, active educational space for our permanent collection that encourages close looking, learning, and diverse experiences with art. Opening this November, we look forward to celebrating the museum's collection and its incredible, diverse offerings.

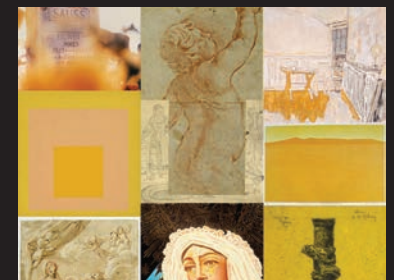
RELATED EVENTS:



GRAND OPENING

Friday, Nov. 10, 6-10pm

Join us for the grand opening of The Center for Object Research and Engagement.



THIS IS NOT A TOUR: THE CORE

Sunday, Feb. 4, 1-2pm

Take an unconventional look at our collection's new home with this offbeat, interactive tour.

2024 ART, ART HISTORY, AND DESIGN FACULTY TRIENNIAL

January 20–July 21, 2024

The *2024 Faculty Triennial* presents an inclusive survey of recent works produced by internationally recognized faculty in the Art, Art History, and Design (AAHD) Department at Michigan State University. The exhibition celebrates their diverse, experimental, and interdisciplinary practices. Within the climate of a top research university, MSU faculty members are continually engaged in a pursuit of excellence utilizing cutting-edge techniques as both artists and educators.

This edition of the exhibition is guest curated by Asha Iman Veal, Associate Curator at the Museum of Contemporary Photography at Columbia College Chicago.

The *2024 Art, Art History, and Design Faculty Triennial* is organized by the Eli and Edythe Broad Art Museum at Michigan State University. This edition of the exhibition is guest curated by Asha Iman Veal, Associate Curator at the Museum of Contemporary Photography at Columbia College Chicago, with Dalina A. Perdomo Álvarez, Curatorial Assistant at the MSU Broad Art Museum. Support for this exhibition is provided by the John and Susan Berding Family Endowment.

RELATED EVENTS:

**(DE)TOUR:
OUR BACKYARD**
Thursday, Feb. 8, 6–7pm
(De)tour through the work of Michigan-based artists who also teach at MSU.

Image:

Installation view of *2021 Art, Art History, and Design Faculty Triennial: Where We Dwell*. Photo: Eat Pomegranate Photography



KAYLA MATTES

DOOMSCROLLING



February 3–August 18, 2024

How often do you catch yourself going down an internet rabbit hole?

DOOMSCROLLING unravels our addiction to digital culture through analog processes of making. Kayla Mattes's hand-made weavings explore the ephemeral concepts that keep us attached to the web: memes, gifs, TikToks, and the quest for information to our most burning, often personal, questions. The acts of making and looking slow down the hurried pace of the internet in an effort to archive and contemplate the moments that define contemporary life. By rendering icons of contemporary culture through weaving and embroidery, the artist asks us to stop doomscrolling, look closely, and rethink the way the digital sphere shapes our daily life.

Kayla Mattes: DOOMSCROLLING is organized by the Eli and Edythe Broad Art Museum at Michigan State University as part of the Artist Project Series and curated by Assistant Curator Rachel Winter. Support for this series is provided by the MSU Federal Credit Union.

Image: Kayla Mattes, *DOOMSCROLL* (detail), 2022. Courtesy of the artist.



2024 WINTER OPENING PARTY

FRIDAY, FEB. 2, 6–8PM

Experience the many offerings of your campus art museum! You're invited to explore our newest exhibitions while enjoying food, music, special guests, art-making activities, and more. All ages are welcome to this museum-wide party!

This event will celebrate the exhibition *Kayla Mattes: DOOMSCROLLING* and the 2024 Art, Art History, and Design Faculty Triennial.



Visit broadmuseum.msu.edu to register for this free event!



Still from *Machines in Flames* (2022),
a film by Thomas Dekeyser and Andrew
Culp. Screening October 13.

BROAD UNDERGROUND FILM SERIES

The Broad Underground Film Series presents experimental and avant-garde film and video screenings programmed in response to exhibitions on view at the MSU Broad Art Museum.

This film series is an ongoing collaboration between the MSU Broad Art Museum and the Film Studies Program, Department of English at Michigan State University.

SCREENINGS IN RESPONSE TO:

SHOULDN'T YOU BE WORKING?

Friday, Oct. 13, 7–9pm
MSU Wells Hall, B122

THE CENTER FOR OBJECT RESEARCH AND ENGAGEMENT

Thursday, Nov. 2, 7–9pm
MSU Wells Hall, B122

RESISTANCE TRAINING: ARTS, SPORTS, AND CIVIL RIGHTS

Friday, Feb. 9, 7–9pm
MSU Wells Hall, B122



GET CREATIVE WITH THE WHOLE FAMILY

Visit broadmuseum.msu.edu for FREE registration and the most up-to-date information.

⇒ JOIN US FOR ⇒

FAMILY DAY

AT THE MSU BROAD ART MUSEUM

FAMILY DAY

First Saturdays, 11am–3pm

Join us on the first Saturday of every month to make art and have fun at the MSU Broad Art Museum. All ages are welcome.

August 5	MOVE
September 2	BALANCE
October 7	TEAM
November 4	FLOW
December 2	HOME
January 6	LIFT
February 3	VOICE



Family Day is generously sponsored by PNC.

FOR FAMILIES



DRAWING MARATHON

Thursday, Sep. 28, 10am–6pm

Ready, set, draw! Make your mark on this annual non-stop drawing extravaganza with the MSU Broad Art Museum and the MSU Department of Art, Art History, and Design.



COCOA AND COLLECTION

Saturday, Dec. 16, 1–3pm

Warm up with hot cocoa and art-making activities inspired by wintry works of art in our collection.

ARACHNOBROADIA!

Sunday, Oct. 29, 1–4pm

Join us for a spooky afternoon of eight-legged fun for all ages inspired by artwork from the MSU Broad Art Museum collection. Get creative with creepy crafts at the museum, then visit your favorite crawly creatures at the MSU Bug House.



SPARTAN CAREER DAY

Wednesday, Feb. 21 +
Thursday, Feb. 22

AM Session: 9–11am
PM Session: 11:30am–1:30pm

What can you do with an art degree? The MSU Department of Art, Art History, and Design joins forces with the MSU Broad Art Museum for a unique experience designed just for high school art students.

HOMESCHOOL DAY: ART FIELD TRIP

Wednesday, Nov. 15, 1–4pm

Connect with other homeschoolers at this day of making, looking, and learning designed just for you and your family.

YOUR CAMPUS, YOUR MUSEUM

Follow us @msubroad to know when the Student Creatives are headed to your neighborhood!

SPARTAN WELLNESS AT THE MSU BROAD ART MUSEUM

SPARTAN WELLNESS

Sundays, 2-4pm

SpARTans, stress less at the museum with this monthly making series.

September 17

October 15

November 19

January 21

February 18

STUDENT CREATIVE COUNCIL

All student events are hosted by the MSU Broad Art Museum Student Creative Council. The Student Creatives connect you to your campus art museum through programs designed for MSU students, by MSU students.

WELCOME BACK, SPARTANS!

Saturday, Aug. 26, 1-4pm +
Sunday, Aug. 27, 1-4pm

Welcome back, students! Stop by your free campus art museum to check out our exhibitions and screen print your own custom-designed tote bag to carry around campus.



DRAWING MARATHON

Thursday, Sep. 28, 10am-6pm

Ready, set, draw! Make your mark on this annual non-stop drawing extravaganza with the MSU Broad Art Museum and the MSU Department of Art, Art History, and Design.

STUDENT NIGHT: SHOULDN'T YOU BE (UN)WORKING?

Wednesday, Oct. 11, 7-9pm

Inspired by our current exhibition *Shouldn't You Be Working?*, stop by the museum for an evening of mindfulness. We'll be slowing down, making art, and hanging out with friends.

MSU STUDENT FAMILY WEEKEND

Sunday, Nov. 5, 10am-4pm

Add a trip to your free campus art museum to your plans for MSU's annual Family Weekend, with art making for you and your family!

FOR STUDENTS

MUSEUM TOUR: FOR STUDENTS, BY STUDENTS

Sunday, Nov. 5, 1-2pm

Here for MSU Family Weekend? Hop on this conversational tour for students (and their families)!



STUDENT NIGHT: KEEP CALM AND SPARTY ON

Wednesday, Jan. 17, 7-9pm

This month we're celebrating our exhibition *Resistance Training*. Stop by the museum for an evening of Spartan spirit with art making, MSU trivia, and togetherness.



LOVE IS A MONSTER: AN ANTI-VALENTINE'S DAY PARTY

Wednesday, Feb. 14, 7-9pm

Destroy all notions of this corporatized holiday with a party!

AN EXTENSION OF YOUR CLASSROOM

To schedule a visit or arrange a facilitated gallery experience designed for your students, please email eebam@msu.edu.

WORKSHOPS

TEACHER FELLOWSHIP: GLOBAL DEI THROUGH ART

November 2023–February 2024

Are you a K-12 educator looking for an opportunity to build your capacity for writing and teaching with global DEI curriculum?

This fellowship is designed in partnership with the African Studies Center, Asian Studies Center, and the Center for Latin America & Caribbean Studies and for educators of all subjects to build curriculum around specific works of art featured in The CORE.

REIMAGINING PLACE AND SPACE

Wednesdays, Aug. 9 + Aug. 16

Rethink your back-to-school routine with an inclusive and transformative professional development art experience! This workshop for K-12 educators will consider ways that art can inspire everyday places to be reimaged into liberatory spaces. Supported by the National Consortium for Teaching about Asia.

FACULTY WORKSHOP: TEACHING WITH OBJECTS

Tuesday, Jan. 16, 10am–12pm

How can encounters with original works of art enhance and support student learning? Faculty of all disciplines are invited to join museum educators for an object-based learning workshop introducing our new Center for Object Research and Engagement (The CORE).

Reach out to Michelle Word, Director of Education, at wordmich@msu.edu to learn more about upcoming workshop opportunities.

FOR EDUCATORS



FACULTY DONUTS

Friday, Sep. 15, 9–10:30am

Curious about university class visits to the MSU Broad Art Museum? Grab a coffee and donuts, chat with colleagues, and learn more about The Center for Object Research and Engagement (The CORE) slated to open in November.



THE CORE GRAND OPENING

Friday, Nov. 10, 6–10pm

Join us for the grand opening of The CORE as we celebrate the completion of our collection's new home in The Center for Object Research and Engagement.



SPARTAN CAREER DAY

Wednesday, Feb. 21 +
Thursday, Feb. 22

AM Session: 9–11am

PM Session: 11:30am–1:30pm

What can you do with an art degree? The MSU Department of Art, Art History, and Design joins forces with the MSU Broad Art Museum for a unique experience designed just for high school art students.



Nonprofit
U.S. Postage
PAID
Lansing, MI
Permit no. 249

**MICHIGAN STATE UNIVERSITY
ELI AND EDYTHE BROAD ART MUSEUM**
547 E Circle Drive
East Lansing, MI 48824

Plan your visit at
broadmuseum.msu.edu
📷 📺 @msubroad

HOURS:
Wednesday–Sunday, 10am–6pm
Always free + open to all

PARKING
Public parking is available both on and off campus. Please visit broadmuseum.msu.edu/parking for more information.

ACCESSIBILITY
The MSU Broad Art Museum is a barrier-free facility and strives to support the accessibility of exhibitions, events, and communications to all visitors. If you have questions about access or wish to request special accommodations, please email eebam@msu.edu.

Cover: Photo courtesy of
University Communications



**FALL
WINTER**